

UMBRA-1200

Low Mist Generator

Item ref: 160.480UK

User Manual



Version 1.0



Caution: Please read this manual carefully before operating
Damage caused by misuse is not covered by the warranty

Recommended fluid

For the UMBRA-1200 haze machine operates using just standard fog fluid and water. We recommend the following fog fluids for use in this machine.

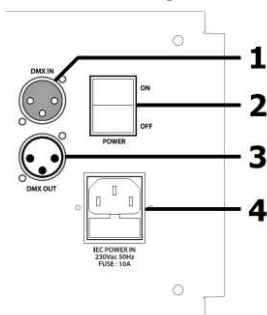
Description	5 Litre Bottle	1 Litre Bottle
Standard Fog Fluid	160.582UK	160.643UK
High Quality Fog Fluid	160.583UK	160.644UK
High Grade Fog Fluid	160.588UK	160.587UK

Use power supply with Earth connection and adequate current capacity for the unit

Use the plug to connect to the main power supply as follows:

Wire	Connection	International signal
Brown	Live	L
Blue	Neutral	N
Yellow /Cyan	Earth	

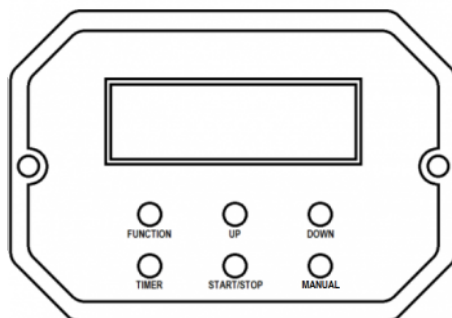
Connection panel



- 1 DMX input (3-pin XLR)
- 2 Power on/off switch
- 3 DMX output (3-pin XLR)
- 4 IEC mains inlet & fuse holder

Control panel

- FUNCTION Press to step through various menu functions
- UP/DOWN Set parameter values +/-
- TIMER Enter timer mode
- START/STOP Start/stop continuous mist
- MANUAL Manual haze



Introduction

Thank you for purchasing the UMBRA-1200 mist machine. This unit can produce a low mist “dry ice” effect for stage productions and themed events. Please read and keep this manual in order to achieve the best results from this equipment and avoid damage through misuse.

Unpacking

The UMBRA-1200 is self-contained in its own flight case with lockable castors for stability. Inside, the main unit is seated on the base with the flexible duct and outlet funnel attached and the fluid tank is installed into the main unit. An IEC mains lead and 5-pin remote control lead are also provided. If you find any accessory is missing or the machine has arrived with any problems, please contact your local dealer at once.

Warning

To prevent risk of fire or electric shock, do not expose electrical parts to rain or moisture. If liquids are spilled on areas other than inside the fluid tank, disconnect the mains, allow the UMBRA-1200 to dry out and have it checked by qualified personnel before further use. Avoid any impact, dropping or extreme pressure to the housing. Avoid blocking or crushing the flexible duct, as this could lead to damage during use. Do not open the case other than the water reservoir and remote control cavity. No user serviceable parts inside. Refer any repair or service to qualified personnel. Allow the UMBRA-1200 to acclimatize to room temperature before operating.

Placement

The UMBRA-1200 has a built-in fluid container which can be removed for filling. When in place, ensure that the cap is securely sealed and the bottle is not inverted. The UMBRA-1200 also has a water reservoir, which should be filled to the required level. The unit in its flight case should be positioned on a stable surface. Remove the lid completely before operating.

Safety

- Check for correct mains voltage and condition of IEC lead before connecting to mains
- This unit must be earthed
- This unit uses a heating element – be aware that parts of the housing may be hot in use!

Cleaning

- Use a soft dry or slightly damp to clean the casing
- Do not use strong solvents for cleaning the housing or case
- Clean the haze mechanism periodically by operating with distilled water instead of haze
- It is also recommended to use fog machine cleaning fluid (160.670UK) periodically to clean out the fog mechanism

Setting up

The UMBRA-1200 is fitted into its own flight case, which is fitted with castors. Roll the unit where it is needed to be operated and secure into position by pressing down the lever on the lockable castors.

Unfasten the 4 butterfly catches on the case and completely remove the lid. The UMBRA-1200 has a funnel and a flexible duct, which should be placed on the floor and aimed at the area where the low-lying mist is to be produced.

Unscrew the cap of the fluid tank and fill with fog fluid (the bottle may be removed to help avoid spilling fluid onto other parts of the housing during filling). Replace the bottle and cap securely and push the feed tube down to the bottom of the bottle to ensure a consistent flow of fluid when the machine is being operated.

At the front of the housing is a hinged lid which can be release by undoing 2 clips either side of the flexible outlet duct. Open the lid using the handle on top and fill with normal tap water to the Recommended Fill Level as indicated on the window at the side of the housing. Too much or too little will result in poor performance.

If DMX512 is to be used for control, connect the DMX signal from the controller to the DMX Input XLR connector (1). Any further DMX controlled units may be connected via the DMX Output XLR connector (3)

The 6-button control panel and display governs settings and standalone operation. This panel can be used in situ or removed and used as a remote controller.

To remove the panel, unfasten the 2 hand screws on each side of the panel and carefully pull the control panel away from the housing. Inside, there is a fixed connector which is normally plugged into the rear of the control unit, but this must now be linked using the 5-pin control lead supplied with the UMBRA-1200.

Once connected, the control panel will operate in the same way as if mounted into the housing. These connections should be made before powering up.

When replacing the control panel into the housing, carefully align the rear connector with the mating connector inside the control panel cavity.

Connect the UMBRA-1200 power using the mains lead provided to the IEC inlet (4)
When all connections are in place, switch on the mains power (2)

Operation

Before mist can be produced, the UMBRA-1200 needs to heat up, for 3 to 5 minutes. If the display shows “Warming”, the heater is pre-heating.

If the display shows “Ready to Fog”, it is at the required temperature for operation.

Settings and standalone operation are entered on the control panel as follows.

Display (FUNC)	Setting (UP/DOWN)	Description
Man Vol	1% - 100% (percent)	Mist Volume in Manual operation
Interval Set	1s - 900s (seconds)	Interval between output on timer
Duration Set	1s - 200s (seconds)	Duration of output on Timer
Volume OUT	1% - 100% (percent)	Mist Volume in Timer operation
Wind Set	1% - 100% (percent)	Mist blowing fan speed
DMX512 Add	001-512	Set the DMX start address

To produce mist on demand, press the START/STOP button for continuous mist output and press again to stop. The Man Vol and Wind Set settings will affect the amount and rate of output.

To initiate a timed output, using FUNC and UP/DOWN buttons, set the required Duration (mist output) and Interval (no mist output) times and then press TIMER to initiate the timer (time countdown will show in the display)

Press TIMER again to stop the timer operation.

The Volume OUT and Wind Set settings will affect the amount and rate of output.

To operate remotely via DMX, use FUNCTION and UP/DOWN buttons to set the DMX start address and then operate across 3 DMX channels as described below
(Note: If a DMX signal is being received, this will override Manual or Timer modes)

DMX channel	Value	Function
Channel 1 (start address)	000-255	Mist output volume 0% - 100%
Channel 2 (start address + 1)	000-255	Fan speed 0% - 100%

After use, switch off the mist output and wait until no more mist is produced.

Unplug from the mains supply and allow the unit to cool down.

Remove and empty the fog fluid tank and empty the water reservoir via a tap near the bottom.

Stow away or replace the control panel if removed from the housing.

Replace the funnel and flexible duct before fitting the lids and moving the UMBRA-1200

Specifications

Power supply	220-240Vac, 50Hz (IEC)
Power consumption	1200W
Fuse	F8AL
Connection	DMX in & out (3-pin XLR), RF receiver (5-pin DIN)
DMX channels	2
Remote frequency	433MHz
Warm up time	3-5 minutes
Fluid capacity	0.8 litre (fog fluid)
Fog output	9000 cu ft (255m ³) /min
Dimensions	590 x 510 x 410mm (in flight case)
Weight	25kg (in flight case)

Troubleshooting

Warning: Hot components! ... Switch off and allow to cool before touching the unit.

No backlight on control panel display (or fan not working)	Check 5-pin lead connection between control panel & main unit
	Check mains voltage is correct and socket is switched on
	Check IEC lead is OK and connected properly
	Check mains fuse in IEC connector and fuse in plug top If fuse blowing repeatedly, refer to qualified service personnel
Control panel display is on but no fog/mist output on manual or continuous mode	Check fluid level in tank and water level in reservoir
	If fluid level is OK and pump working, the lines may be blocked
	Check that output is not set to minimum on the control panel
	If blocked, clean with fog machine cleaner & distilled water
	Check that if DMX mode is selected, the DMX channel is correct
	In DMX mode, check that fog/mist output is not set to minimum
	Check that flexible duct is not blocked or obstructed



Disposal: The "Crossed Wheelie Bin" symbol on the product means that the product is classed as Electrical or Electronic equipment and should not be disposed with other household or commercial waste at the end of its useful life. The goods must be disposed of according to your local council guidelines

*Errors and omissions excepted.
Copyright© 2018. AVSL Group Ltd*

qtx		Effects Fluid Chart				
Bubble Fluid						
Stock Code	Volume	Description	Results		For use with	
160.574UK	1 Litre	Bubble fluid	Light, long-lasting bubbles		160.462UK, 160.560UK, 160.562UK, 160.563UK	
160.575UK	5 Litre				160.564UK	
160.576UK	1 Litre	UV bubble fluid	Light bubbles which glow in UV light			
160.577UK	5 Litre					
Snow Fluid						
Stock Code	Volume	Description	Results		For use with	
160.578UK	1 Litre	Snow fluid	High quality snow fluid. Lasts 30% longer than other standard fluids		160.565UK, 160.569UK	
160.579UK	5 Litre					
Fog Fluid						
Stock Code	Volume	Description	Colour	Results		For use with
160.643UK	1 Litre	Standard fog fluid	Yellow	Dispersion	Stability	160.452UK, 160.453UK, 160.461UK or any machine up to 900W
160.582UK	5 Litre			Quick	Low	
160.587UK	1 Litre	High grade fog fluid	Orange	Slow	Good	160.455UK, 160.456UK, 160.457UK or any machine 1000-1500W
160.588UK	5 Litre					
160.644UK	1 Litre	High quality fog fluid	Pink	Slow	Good	160.447UK
160.589UK	5 Litre	Premium fog fluid	Clear	Slow	Excellent	
160.592UK	1 Litre	Low level fog fluid	Clear	Slow	Excellent	All fog machines
160.593UK	5 Litre	Fog machine cleaner	Clear	Slow	Extends life of your fog machine	
160.670UK	20ml					
Haze						
Stock Code	Volume	Description	Colour	Results		For use with
160.591UK	5 Litre	High quality haze fluid	Clear	Dispersion	Stability	160.458UK, 160.459UK, 160.462UK, 160.465UK
160.591UK	5 Litre	Eco haze fluid		Slow	Good	
				Medium	Good	
Fog						
Stock Code	Volume	Description	Results		For use with	
160.650UK	20ml	Coconut fog fragrance	Adds fragrance to fog or haze		20ml = 5 Litre fog or haze fluid	
160.651UK	20ml	Mint fog fragrance				
160.652UK	20ml	Vanilla fog fragrance				
160.653UK	20ml	Tropical fog fragrance				
160.654UK	20ml	Strawberry fog fragrance				
160.655UK	20ml	Energy fog fragrance				