



# BM-PORTABLE

## USER GUIDE

H10799 - Version 1 / 03-2018

# 1 - Safety information

## Important safety information



This unit is intended for indoor use only. Do not use it in a wet, or extremely cold/hot locations. Failure to follow these safety instructions could result in fire, electric shock, injury, or damage to this product or other property.



Any maintenance procedure must be performed by a CONTEST authorised technical service. Basic cleaning operations must thoroughly follow our safety instructions.



This product contains non-isolated electrical components. Do not undertake any maintenance operation when it is switched on as it may result in electric shock.

## Symbols used



This symbol signals an important safety precaution.



The WARNING symbol signals a risk to the user's physical integrity. The product may also be damaged.



The CAUTION symbol signals a risk of product deterioration.

## Instructions and recommendations

### 1 - Please read carefully :

We strongly recommend to read carefully and understand the safety instructions before attempting to operate this unit.

### 2 - Please keep this manual :

We strongly recommend to keep this manual with the unit for future reference.

### 3 - Operate carefully this product :

We strongly recommend to take into consideration every safety instruction.

### 4 - Follow the instructions:

Please carefully follow each safety instruction to avoid any physical harm or property damage.

### 5 - Avoid water and wet locations :

Do not use this product in rain, or near washbasins or other wet locations.

### 6 - Installation :

We strongly encourage you to only use a fixation system or support recommended by the manufacturer or supplied with this product. Carefully follow the installation instructions and use the adequate tools.

Always ensure this unit is firmly fixed to avoid vibration and slipping while operating as it may result in physical injury.

### 7 - Ceiling or wall installation :

Please contact your local dealer before attempting any ceiling or wall installation.

### 8 - Ventilation :

The cooling vents ensure a safe use of this product, and avoid any overheating risk. Do not obstruct or cover these vents as it may result in overheating and potential physical injury or product damage. This product should never be operated in a closed non-ventilated area such as a flight case or a rack, unless cooling vents are provided for the purpose .

### 9 - Heat exposure :

Sustained contact or proximity with warm surfaces may cause overheating and product damages. Please keep this product away from any heat source such as a heaters, amplifiers, hot plates, etc...

**CAUTION**

**RISK OF ELECTRIC SHOCK**

**DO NOT OPEN**

**WARNING :** This unit contains no user-serviceable parts. Do not open the housing or attempt any maintenance by yourself. In the unlikely even your unit may require service, please contact your nearest dealer.  
In order to avoid any electrical malfunction, please do not use any multi-socket, power cord extension or connecting system without making sure they are perfectly isolated and present no defect.

**Sound levels**

Our audio solutions deliver important sound pressure levels (SPL) that can be harmful to human health when exposed during long periods. Please do not stay in close proximity of operating speakers.

**Recycling your device**

- As HITMUSIC is really involved in the environmental cause, we only commercialise clean, ROHS compliant products.
- When this product reaches its end of life, take it to a collection point designated by local authorities. The separate collection and recycling of your product at the time of disposal will help conserve natural resources and ensure that it is recycled in a manner that protects human health and the environment.

### 10 - Electric power supply :

This product can only be operated according to a very specific voltage. These information are specified on the label located at the rear of the product.

### 11 - Power cords protection:

Power-supply cords should be routed so that they are not likely to be walked on or pinched by items placed upon or against them, paying particular attention to cords at lugs, convenience receptacles and the point where they exit from the fixture.

### 12 - Cleaning precautions :

Unplug the product before attempting any cleaning operation. This product should be cleaned only with accessories recommended by the manufacturer. Use a damp cloth to clean the surface. Do not wash this product.

### 13 - Long periods of non use :

Disconnect the unit's main power during long periods of non use.

### 14 - Liquids or objects penetration :

Do not let any object penetrate this product as it may result in electric shock or fire. Never spill any liquid on this product as it may infiltrate the electronic components and result in electric shock or fire.

### 15 - This product should be serviced when :

Please contact the qualified service personnel if :

- The power cord or the plug has been damaged.
- Objects have fallen or liquid has been spilled into the appliance.
- The appliance has been exposed to rain or water.
- The product does not appear to operate normally.
- The product has been damaged.

### 16 - Inspection/maintenance :

Please do not attempt any inspection or maintenance by yourself. Refer all servicing to qualified personnel.

### 17 - Operating environment :

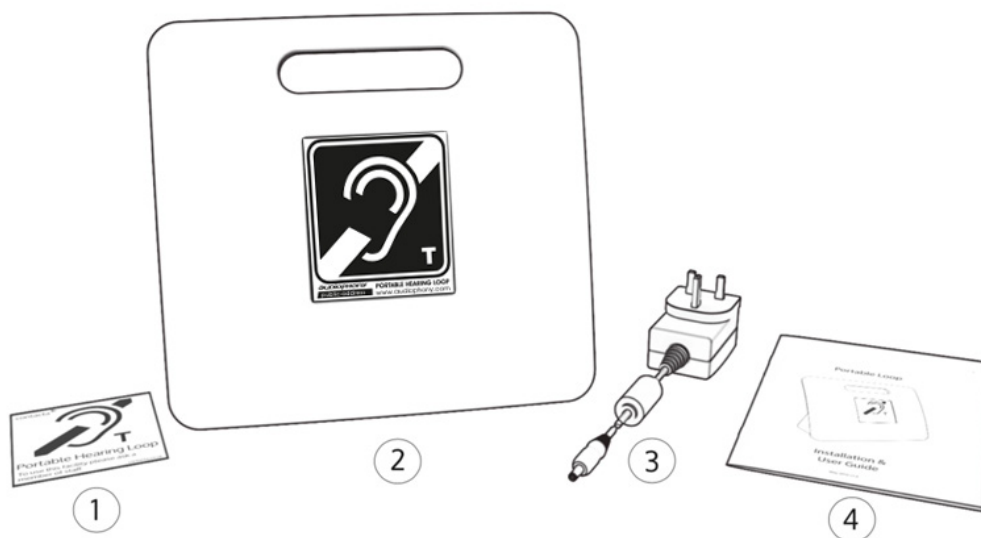
Ambient temperature and humidity: +5 - +35°C, relative humidity must be less than 85% (when cooling vents are not obstructed).  
Do not operate this product in a non-ventilated, very humid or warm place.

## 2 - Introduction

The portable magnetic loop is a versatile solution. Mobile, it fits perfectly on your desktops and can be moved at will.

It can be used for small group conversation, ideally two people, in small spaces such as offices.

## 3 - Components



1. Sticker "space for people with hearing loss"
2. Portable magnetic loop
3. Power supply
4. Installation and Use Guide

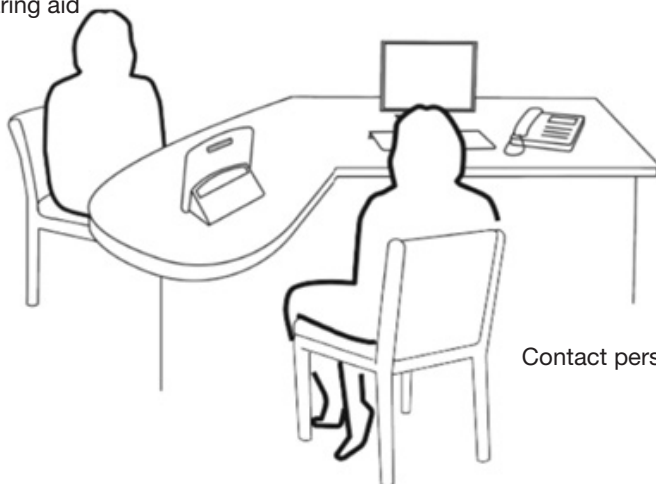
#### 4 - Charging the portable magnetic loop

Note: it is important to fully charge your portable magnetic loop before turning it on for the first time on reception.

1. Connect the power cable to the mains socket.
2. Connect the power cable to the magnetic loop on the back of the case using the power plug. The red indicator light will blink.
3. The indicator light will stay red when charging is complete.

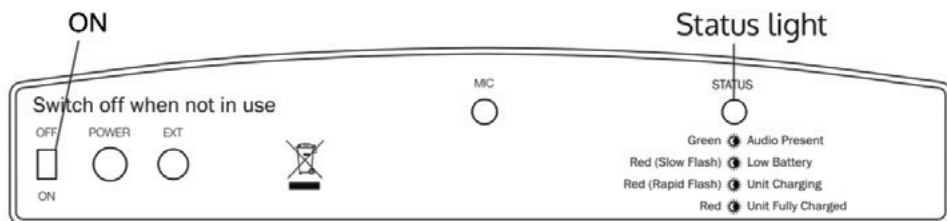
#### 5 - Adjusting the portable magnetic loop

Person with hearing aid



Contact person

1. Place the portable magnetic loop between the wearer of the hearing aid and the second person on the desk.
2. Make sure that the back of the magnetic loop, equipped with the microphone, is directed towards the person who is not fitted.
3. The front of the device must face the person with hearing loss.
4. Slide the switch on the left behind the unit to the ON position.
5. The system is now ready for use.



## 6 - Usage

Once the magnetic loop is turned on, you can start your conversation normally:

In normal operation, if the LED lights green when you speak, it indicates that the system is working.

If the prosthesis wearer does not pick up a clear signal:

1. Make sure the portable magnetic loop is fully charged.
2. Adjust the position of the buckle on the desk, the holder of the prosthesis should not be more than 1.2 meters from the buckle.
3. Ensure that the wearer has properly engaged the T-position of the hearing aid.
4. Ask the wearer of the hearing aid to check the sound volume settings on the hearing aid.

If you have followed the above steps and the prosthesis wearer is still unable to hear a clear signal, this may be due:

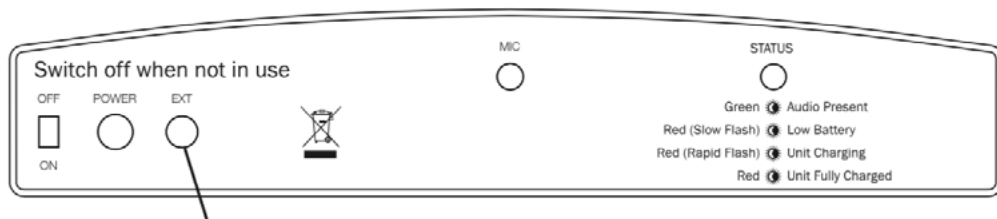
- A failure of the loop
- A defect in the wearer's hearing aid
- The wearer's hearing aid coil is not activated.

To determine if the fault comes from the portable magnetic loop, please refer to the Troubleshooting section.

## 7 - Additional connections

### 7-1 External microphone

If more than two people are involved in the conversation, it is strongly recommended to use a loop adapted to the large surface area. If you do not have a microphone available, it is nevertheless possible to use an external microphone.



1. Insert the microphone jack into the EXT jack on the back of the unit.
2. Place the external microphone towards those who speak.

## 7-2 External sound source

To connect the loop to a TV or other external sound source, connect the loop with a jack/jack cable.

1. Insert the jack connection into the appropriate outlet on your sound source.
2. Insert the jack plug into the EXT socket on the back of the portable loop.
3. Position the buckle so that it faces the wearer of the hearing instrument.

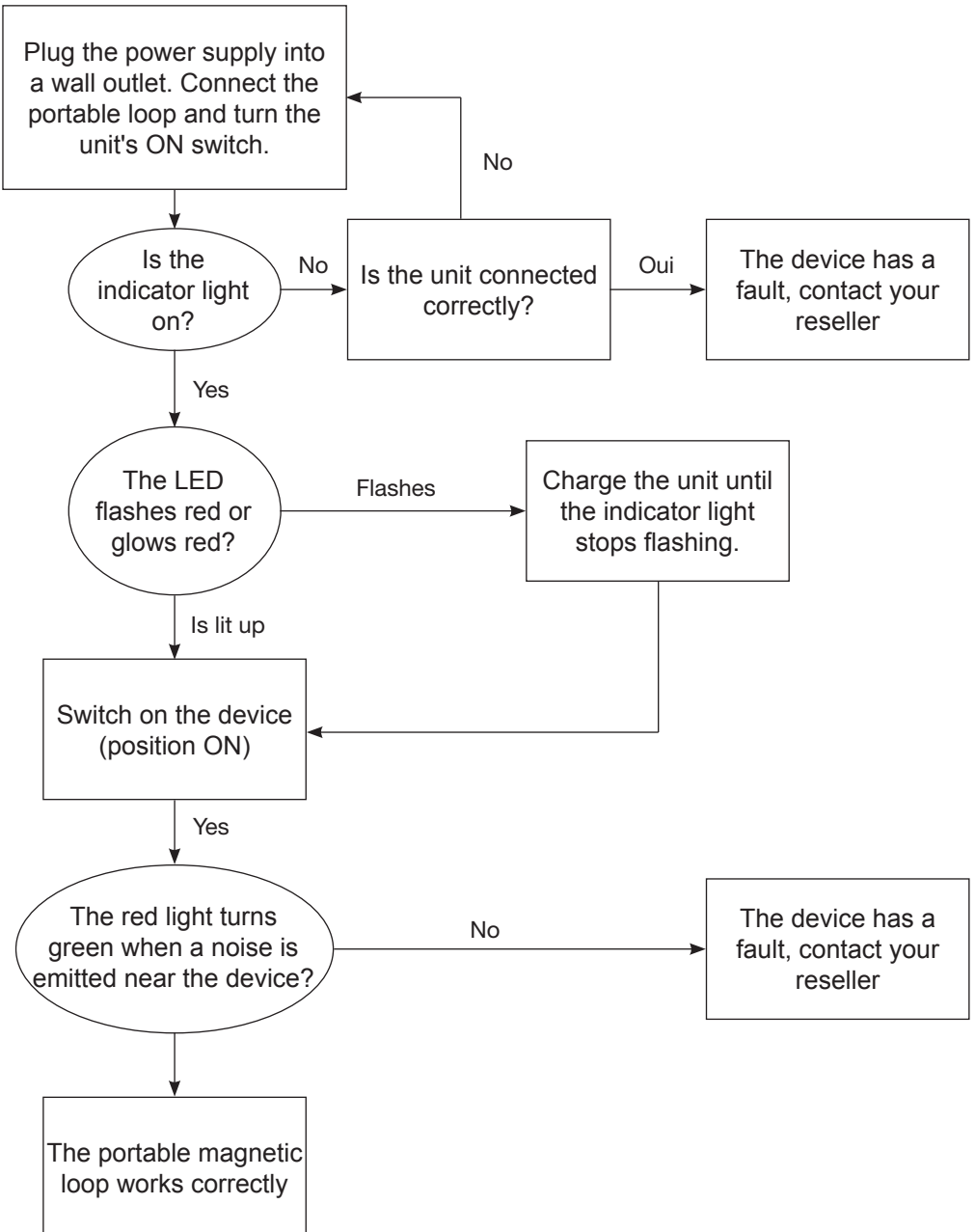
Note: The microphone is inactive when the external microphone is connected.

## 8 - Important information

- A green LED indicates that the unit is functioning properly.
- If the battery is low, a red light will blink alternately with the green light.
- The device can be charged while in use.
- When the portable magnetic loop is not in use, it must be connected to its charger in position O. This will consume very little power.

Note: The operating time of the device with full charge and not plugged into the mains is approximately 4 hours.

9 - Troubleshooting



If the diagram is not enough, please contact your reseller.

Because AUDIOPHONY® takes the utmost care in its products to make sure you only get the best possible quality, our products are subjects to modifications without prior notice. That is why technical specifications and the products physical configuration might differ from the illustrations.

Make sure you get the latest news and updates about the AUDIOPHONY® products on [www.audiophony.com](http://www.audiophony.com)  
AUDIOPHONY® is a trademark of **HITMUSIC SAS** - Parc d'activités Cahors sud - 46230 FONTANES - FRANCE