



Slimline CW & WW Series

1 x 20W COB LED

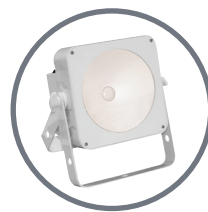
User Manual



Convection
cooled,
no fan!



Optional
IR remote
Order ref:
LEDJ90E



White housing
versions

Order codes:

LEDJ61 - 1CW20 Black housing

LEDJ61A - 1CW20 White housing

LEDJ62 - 1WW20 Black housing

LEDJ62A - 1WW20 White housing

WARNING

FOR YOUR OWN SAFETY, PLEASE READ THIS USER MANUAL CAREFULLY BEFORE YOUR INITIAL START-UP!

- Before your initial start-up, please make sure that there is no damage caused during transportation.
- Should there be any damage, consult your dealer and do not use the equipment.
- To maintain the equipment in good working condition and to ensure safe operation, it is necessary for the user to follow the safety instructions and warning notes written in this manual.
- Please note that damages caused by user modifications to this equipment are not subject to warranty.



IMPORTANT:

The manufacturer will not accept liability for any resulting damages caused by the non-observance of this manual or any unauthorised modification to the equipment.

- Never let the power cable come into contact with other cables. Handle the power cable and all mains voltage connections with particular caution!
- Never remove warning or informative labels from the unit.
- Do not open the equipment and do not modify the unit.
- Do not connect this equipment to a dimmer pack.
- Do not switch the equipment on and off in short intervals, as this will reduce the system's life.
- Only use the equipment indoors.
- Do not expose to flammable sources, liquids or gases.
- Always disconnect the power from the mains when equipment is not in use or before cleaning! Only handle the power-cable by the plug. Never pull out the plug by pulling the power-cable.
- Make sure that the available voltage is between 100~240V, 50/60Hz.
- Make sure that the power cable is never crimped or damaged. Check the equipment and the power cable periodically.
- If the equipment is dropped or damaged, disconnect the mains power supply immediately and have a qualified engineer inspect the equipment before operating again.
- If the equipment has been exposed to drastic temperature fluctuation (e.g. after transportation), do not connect power or switch it on immediately. The arising condensation might damage the equipment. Leave the equipment switched off until it has reached room temperature.
- If your product fails to function correctly, stop use immediately. Pack the unit securely (preferably in the original packing material), and return it to your Pro Light dealer for service.
- Only use fuses of same type and rating.
- Repairs, servicing and power connection must only be carried out by a qualified technician. THIS UNIT CONTAINS NO USER SERVICEABLE PARTS.
- WARRANTY: One year from date of purchase.

OPERATING DETERMINATIONS

If this equipment is operated in any other way, than those described in this manual, the product may suffer damage and the warranty becomes void. Incorrect operation may lead to danger e.g: short-circuit, burns and electric shocks etc.

Do not endanger your own safety and the safety of others!

Incorrect installation or use can cause serious damage to people and/or property.

Slimline CW & WW COB Series

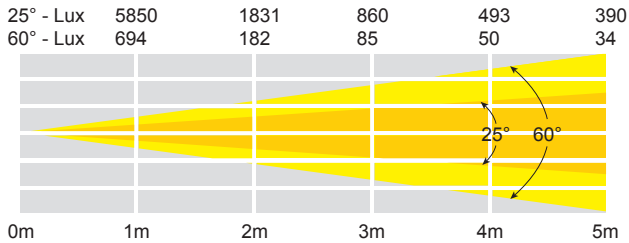
Housing a 20W COB LED, the Slimline series gives smooth, even light across the wide 60° beam angle. Supplied with a removable 25° beam reduction lens the fixture offers greater versatility enabling rental companies to stock one product with two beam angle options. These units have rugged, all metal housing, side entry XLR and power connections and measure only 128mm in depth for easy transportation and installation. They can be operated in sound active, stand-alone, master/slave or DMX modes.

- 1 x 20W cool white (6500K) or warm white (3200K) COB LED
- Interchangeable beam angle: 25° or 60° (field angle: 80°)
- 3000Hz refresh rate
- DMX channels: 1 or 2 selectable
- Static colour, colour change, colour fade, auto run, sound active and master/slave modes
- 0 - 100% dimming with variable strobe
- Bracket allows for multiple rigging or floor standing applications
- Recessed rear control panel and rubber feet allow the panel to sit flat on the floor for uplighting
- 4 push button menu with LED display
- 3-pin XLR in/out sockets
- IEC Power in/out sockets
- Side entry XLR and power connections
- Convection cooled
- Optional IR remote (LEDJ90E)

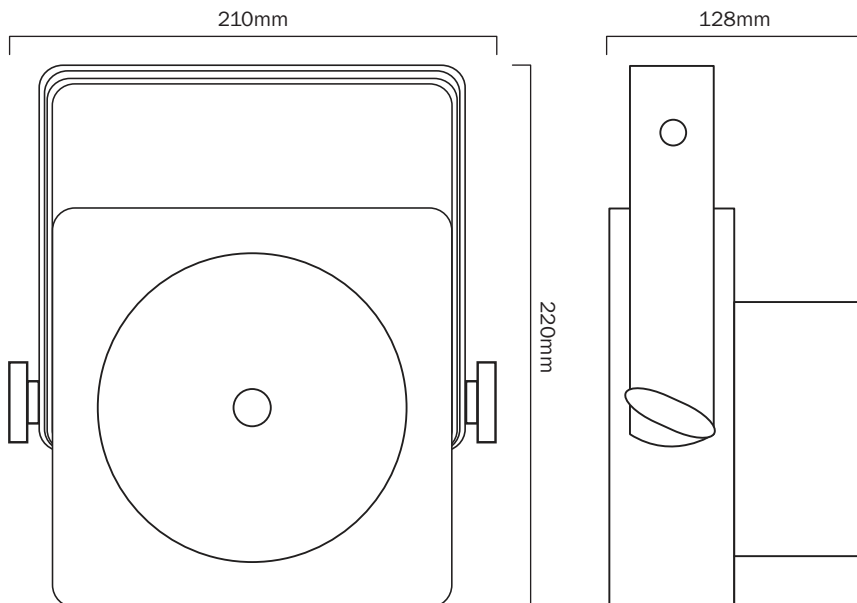
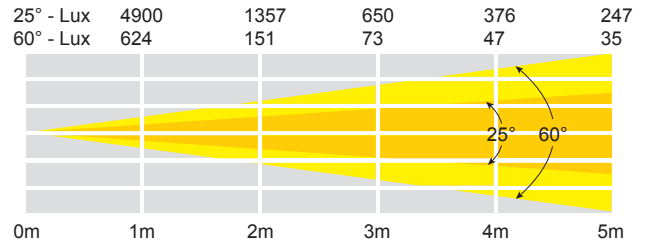


White housing

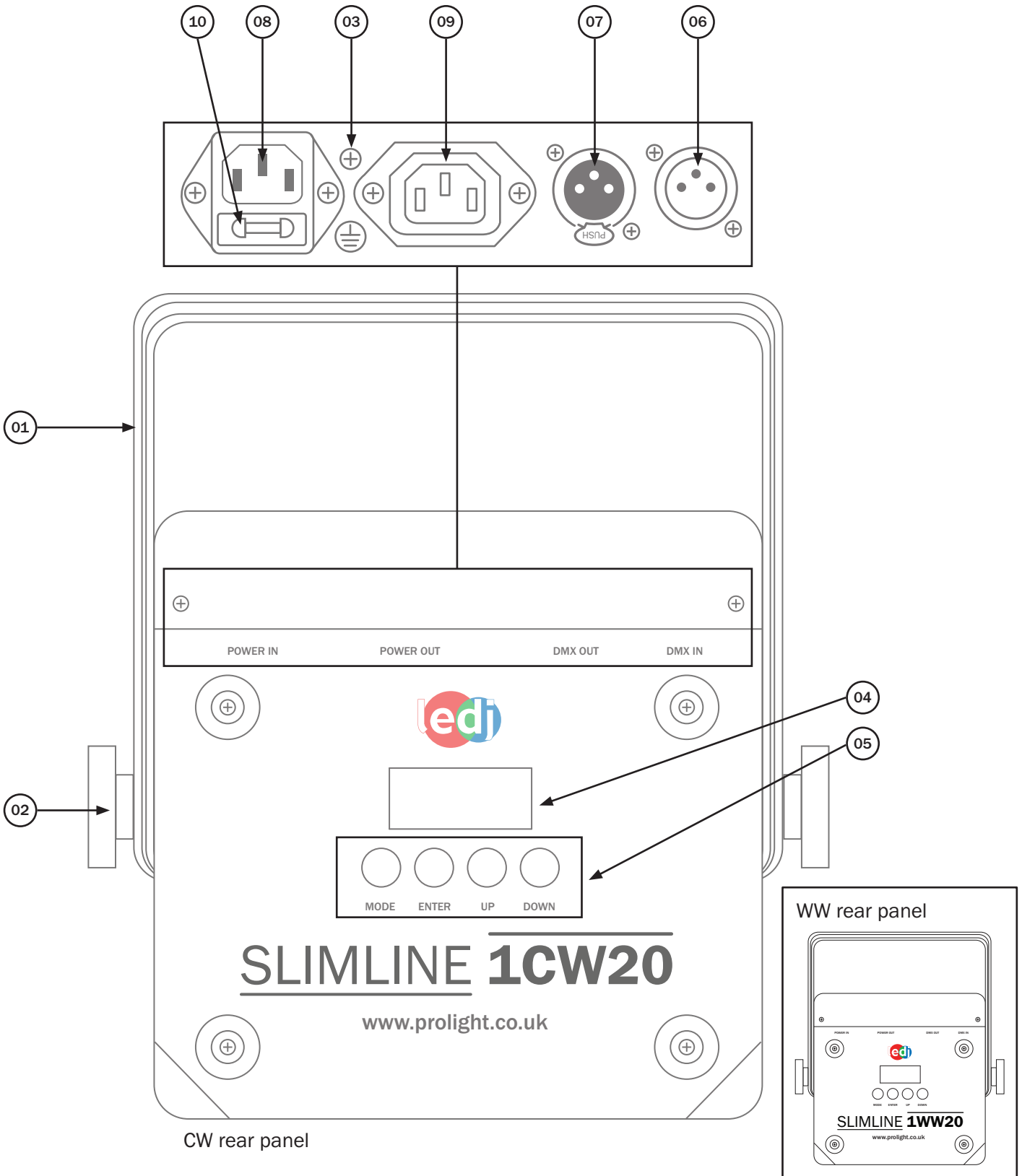
CW version



WW version



Specifications	
Power consumption	30W
Power supply	100~240V, 50/60Hz
Dimensions	210 x 128 x 220mm
Weight	1.8kg
Order code	LEDJ61 - 1CW20 Black housing
Order code	LEDJ61A - 1CW20 White housing
Order code	LEDJ62 - 1WW20 Black housing
Order code	LEDJ62A - 1WW20 White housing



- 01 - Bracket
- 02 - Bracket tightening knobs
- 03 - Earth point
- 04 - LED display

- 05 - Function buttons
- 06 - DMX input socket
- 07 - DMX output socket
- 08 - IEC power in socket

- 09 - IEC power out socket
- 10 - Fuse 1A 250V

In the box: **1 x fixture,**
1 x 25° lens,
1 x power cable
& 1 x user manual

DMX channel mode:

Operating in a DMX control mode environment gives the user the greatest flexibility when it comes to customising or creating a show. In this mode you will be able to control each individual trait of the fixture and each fixture independently.

To access the DMX channel mode, press the “**MODE**” button on the rear of the unit to show *ADD 1* on the LED display. Now press the “**ENTER**” button and use the “**UP**” and “**DOWN**” buttons to set the desired DMX address. Now press the “**ENTER**” button to choose one of the 1 or 2 DMX channel modes use the “**UP**” and “**DOWN**” buttons, and press the “**ENTER**” button to confirm the setting.

To exit out of any of the above options, press the “**MODE**” button.

1 channel mode:

Channel	Value	Function
1	0-255	0-100% dimming

2 channel mode:

Channel	Value	Function
1	0-255	0-100% master dimmer
2	0	No function
	1-255	Variable strobe (slow-fast)

Dimming mode:

To access the dimming mode, press the “**MODE**” button on the rear of the unit to show *0000* on the LCD display. Then press the “**MODE**” to set the desired brightness. Now press “**ENTER**” until the display shows *F - - 0* on the LED display and use the “**UP**” and “**DOWN**” buttons to set the strobe speed.

Value: 0 - 9 (0 = Off, 9 = Fast)

To exit out of any of the above options, press the “**MODE**” button.

Master/slave mode:

To set the master unit, press the “**MODE**” button on the rear of the master unit then select your desired program (sound active, auto, static colour, colour mix or one of the built-in programs).

To set the other units in slave mode, press the “**MODE**” button on the rear of the unit to show *SLAU* on the LED display and press the “**ENTER**” button to confirm the setting. The unit will now run in sequence with the master unit.

To exit out of any of the above options, press the “**MODE**” button.

Please ensure that all slave units are set to the same DMX channel mode as the master unit.

Sound active mode:

To access the sound active mode, press the “**MODE**” button on the rear of the unit to show *5000* on the LED display. Now press the “**ENTER**” button and use the “**UP**” and “**DOWN**” buttons to set the sound sensitivity level from *50.00 ~ 50.99* and press the “**ENTER**” button to confirm the setting.

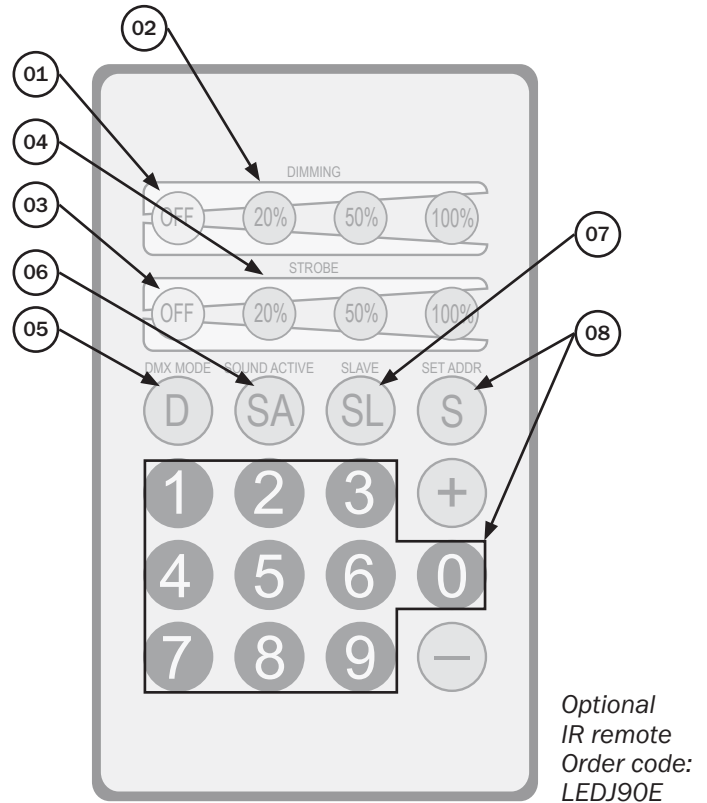
Value: 00 - 99 (00 = low, 99 = high)

To exit out of any of the above options, press the “**MODE**” button.

Optional IR remote functions:

Button functions:

- 01 - Blackout
- 02 - To set the brightness of the LED either select 20%, 50% or 100% or alternatively you can use the '+' and '-' buttons
- 03 - Flash off
- 04 - To set the flash speed of the LED either select 20%, 50% or 100% or alternatively you can use the '+' and '-' buttons
- 05 - Set the LED into DMX mode
- 06 - Set the LED into sound active mode
- 07 - Set the LED into slave mode
- 08 - Set the DMX address for the LED



DMX address examples:

To set the DMX address;

- Press the “S” button, the LED illuminate in full, you can now start to set the DMX address
- Select the required 3 digit DMX address (eg 001 or 136 or 275) the unit will then flash to confirm the address has been set
- Now press the “DMX MODE” button to save the new address into the memory

Important notes:

- Set the DMX address on each fixture before plugging into the DMX controller
- The IR remote is cannot be used when the fixture(s) are being controlled by a DMX controller
- The maximum transmitter distance is 10m - Please make sure that you have the IR remote aimed directly at the front panel of each fixture to be programmed
- If you do not press the “DMX MODE” button after you have changed the DMX address, when you power down the fixture it will lose the address you have set

Setting the DMX address:

The DMX mode enables the use of a universal DMX controller. Each fixture requires a “start address” from 1- 511. A fixture requiring one or more channels for control begins to read the data on the channel indicated by the start address. For example, a fixture that occupies or uses 7 channels of DMX and was addressed to start on DMX channel 100, would read data from channels: 100,101,102,103,104,105 and 106. Choose a start address so that the channels used do not overlap. E.g. the next unit in the chain starts at 107.

DMX 512:

DMX (Digital Multiplex) is a universal protocol used as a form of communication between intelligent fixtures and controllers. A DMX controller sends DMX data instructions from the controller to the fixture. DMX data is sent as serial data that travels from fixture to fixture via the DATA “IN” and DATA “OUT” XLR terminals located on all DMX fixtures (most controllers only have a data “out” terminal).

DMX linking:

DMX is a language allowing all makes and models of different manufactures to be linked together and operate from a single controller, as long as all fixtures and the controller are DMX compliant. To ensure proper DMX data transmission, when using several DMX fixtures try to use the shortest cable path possible. The order in which fixtures are connected in a DMX line does not influence the DMX addressing. For example; a fixture assigned to a DMX address of 1 may be placed anywhere in a DMX line, at the beginning, at the end, or anywhere in the middle. When a fixture is assigned a DMX address of 1, the DMX controller knows to send DATA assigned to address 1 to that unit, no matter where it is located in the DMX chain.

DATA cable (DMX cable) requirements (for DMX operation):

This fixture can be controlled via DMX-512 protocol. The DMX address is set on the back of the unit. Your unit and your DMX controller require a standard 3-pin XLR connector for data input/output, see image below.



Further DMX cables can be purchased from all good sound and lighting suppliers or Pro Light Concepts dealers.

Please quote:

CABL10 – 2m

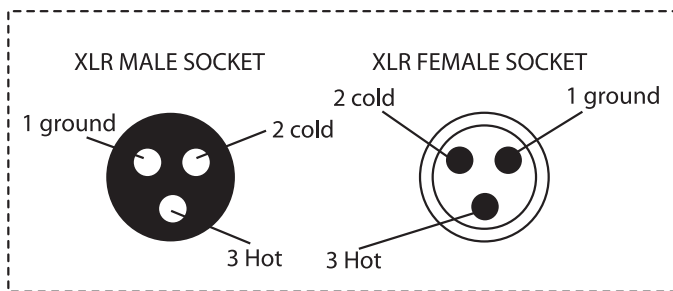
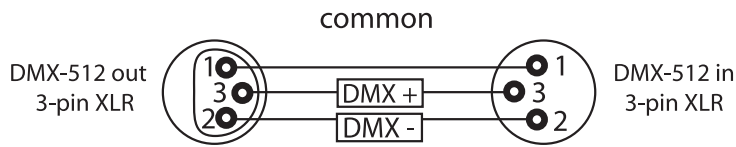
CABL11 – 5m

CABL12 – 10m

Also remember that DMX cable must be daisy chained and cannot be split.

Notice:

Be sure to follow the diagrams below when making your own cables. Do not connect the cables shield conductor to the ground lug or allow the shield conductor to come in contact with the XLRs outer casing. Grounding the shield could cause a short circuit and erratic behaviour.



XLR Pin Configuration
Pin 1 = Ground
Pin 2 = Negative
Pin 3 = Positive

Special note:

Line termination:

When longer runs of cable are used, you may need to use a terminator on the last unit to avoid erratic behaviour.

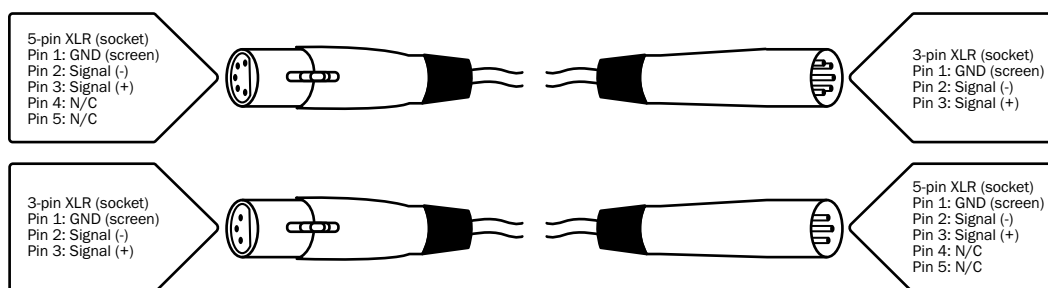
Using a cable terminator will decrease the possibilities of erratic behaviour.

(3-pin - Order ref: CABL90, 5-pin - Order ref: CABL89)

Termination reduces signal transmission problems and interference. It is always advisable to connect a DMX terminal, (resistance 120 Ohm 1/4 W) between pin 2 (DMX-) and pin 3 (DMX+) of the last fixture.

5-pin XLR DMX connectors:

Some manufactures use 5-pin XLR connectors for data transmission in place of 3-pin. 5-pin XLR fixtures may be implemented in a 3-pin XLR DMX line. When inserting standard 5-pin XLR connectors in to a 3-pin line a cable adaptor must be used. The diagram below details the correct cable conversion.





***Correct Disposal of this Product
(Waste Electrical & Electronic Equipment)***

**(Applicable in the European Union and other European countries
with separate collection systems)**

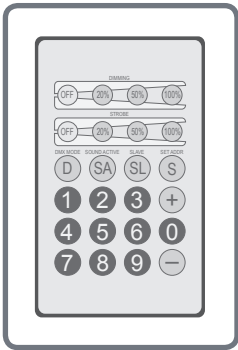
This marking shown on the product or its literature, indicates that it should not be disposed with other household wastes at the end of its working life. To prevent possible harm to the environment or human health from uncontrolled waste disposal, please separate this from other types of wastes and recycle it responsibly to promote the sustainable reuse of material resources.

Household users should contact either the retailer where they purchased this product, or their local government office, for details of where and how they can take this item for environmentally safe recycling.

Business users should contact their supplier and check the terms and conditions of the purchase contract. This product should not be mixed with other commercial wastes for disposal.



Please contact your local retailer to purchase these accessories.



Optional IR remote
Order code: LEDJ90E



Optional Quad Case (Holds 4 x fixtures)
Order code: CASE95

To keep up-to-date on the latest accessories and product range additions please visit www.prolight.co.uk



