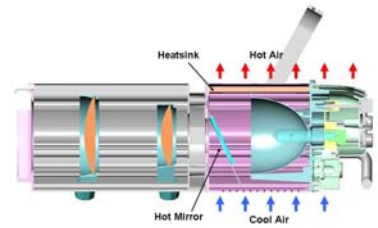


SELECON

Performance Lighting



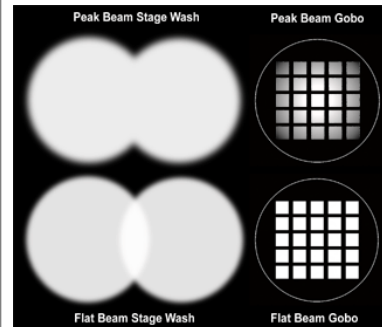
Cool beam technology removes heat from the beam to protect the performer; and to improve pattern and colour filter life.



Align the pattern image as you require, quickly and accurately using the adjustable pattern holder.



Full peak / flat distribution of the light beam using the Selecon planetary gear system.



Quickly and precisely set your required shutter cuts using the shutter rotational system.



Easy, quick access to clean lenses or change lens systems. No tools required.



Available in white paint finish, complete with white shutter and focus handles.

ACCLAIM AXIAL ZOOMSPOT

18°-34° & 24°-44°

Shipped with fitted safety bond

A MODERN COMPACT HIGH PERFORMANCE, 600W cool beam profile delivering precise beam control, which fully complies with European safety rules – available in two zoom models: 18°-34° & 24°-44°.

* **SAFETY:** automatic mains power isolation when opened for lamping, no chance of mounting a lamp into a live socket.

* **SIMPLE TO USE LAMP ALIGNMENT:** maximises light output and beam quality. Uses the readily available GKV lamp.

* indicates **POTENTIAL TENDER SPECIFICATION BIDLOCK**

Applications: versatile high performance profile for the smaller to mid size stage and studio, precise optics ensures excellent pattern projection.

Useful throw distances: 18° – 34° 3-15m
 24° – 44° 2-12m

Available in white high temperature paint finish.

Supplied with: 1 x colour frame per unit, 1m cable, safety bond, lens safety mesh and manual.

Accessories: pattern holder (M), adjustable iris, spare lens safety mesh, 18°-34° or 24°-44° lens tray, spare colour frame: 125mm x 125mm.

Pattern rotators available from Apollo or Rosco.

Lamps: 220V-240V

600W GKV, 400hrs average life

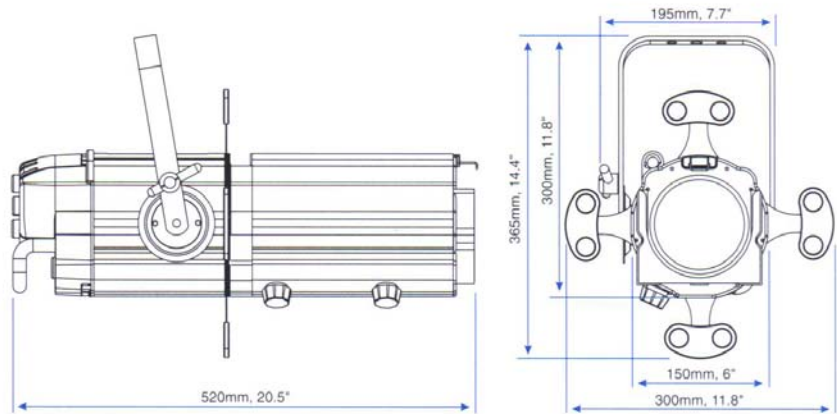
600W GLB, 1500hrs average life

Alternative to: S4 Junior Zoom, Altman 4.5 15-30 Zoom, Altman 3.5Q, Strand S/L Zooms.

S4 Junior is a Trademark of Electronic Theatre Controls / Altman is a Trademark of Altman Lighting / Strand is a trademark of Strand Lighting.

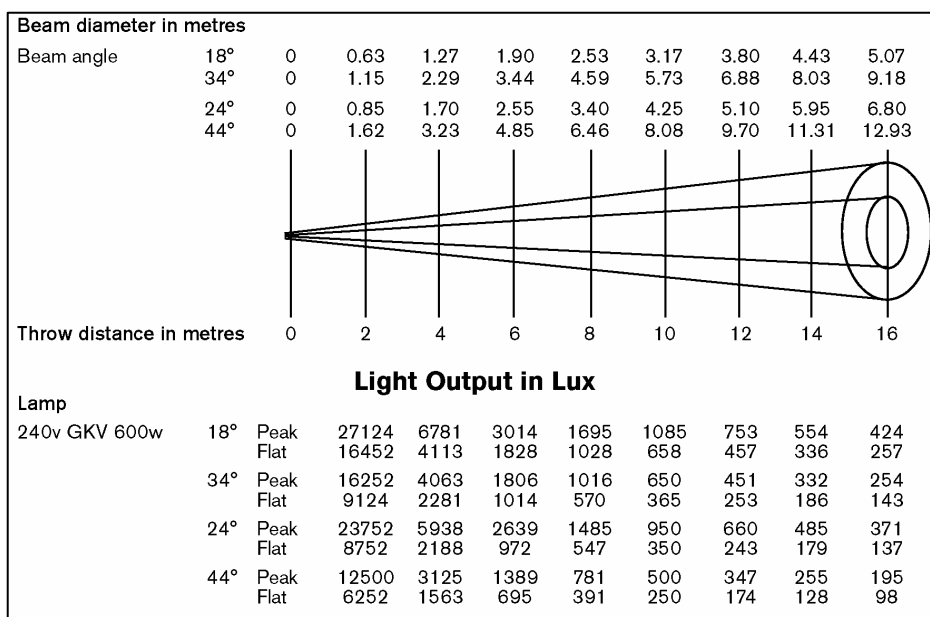
Physical dimensions and weight:

Luminaire weight: 5.6kg



Photometric data:

Tests conducted using a standard GKV, 600W, 240V lamp.



Order codes:

- Acclaim Axial Zoomspot 18°-34° 12ACX1834UK
- Acclaim Axial Zoomspot 24°-44° 12ACX2444UK
- Acclaim Iris 15ACIRIS
- Acclaim Rotatable Pattern Holder 15ACGH
- Acclaim 18°- 34° Lens Tray 15ACAX1834LT
- Acclaim 24°- 44° Lens Tray 15ACAX2444LT
- Lens Safety Mesh 15ACSM
- Suspension Hookclamp 20HC
- Additional Colour Frame 20CFMF
- Additional Safety Bond 20SC

More information:

www.seleconlight.com/acclaimaxial

for downloadable product specification sheet, bid specification sheet, exploded parts diagram, CE certification, operation manual, a copy of this leaflet and further related product information.

