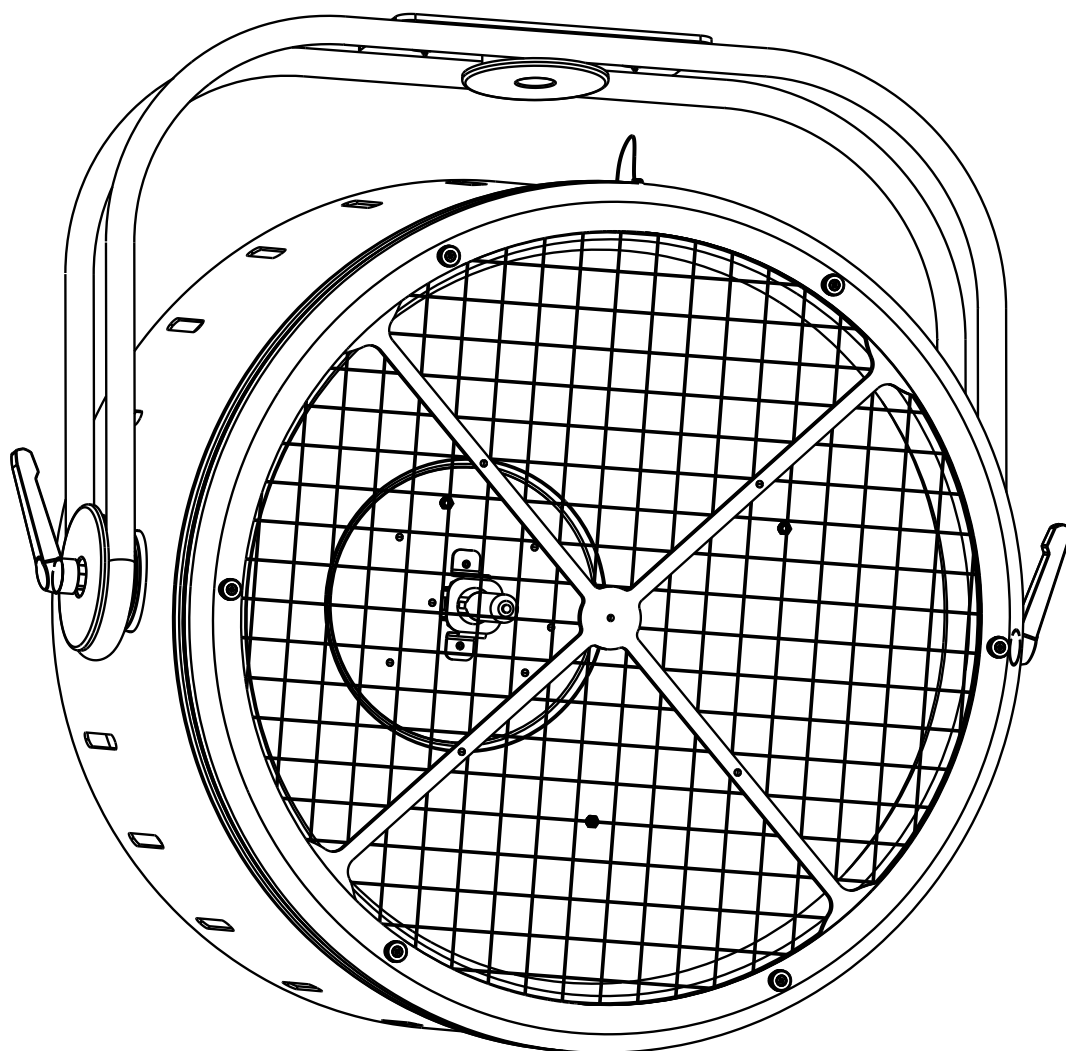


BT-VINTAGE



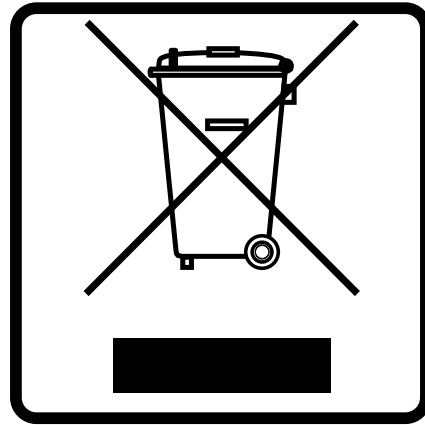
ENGLISH Operation Manual

Other languages can be downloaded from:
WWW.BRITEQ-LIGHTING.COM



Version: 1.0





EN - DISPOSAL OF THE DEVICE

Dispose of the unit and used batteries in an environment friendly manner according to your country regulations.

FR - DÉCLASSER L'APPAREIL

Débarrassez-vous de l'appareil et des piles usagées de manière écologique Conformément aux dispositions légales de votre pays.

NL - VERWIJDEREN VAN HET APPARAAT

Verwijder het toestel en de gebruikte batterijen op een milieuvriendelijke manier conform de in uw land geldende voorschriften.

DU - ENTSORGUNG DES GERÄTS

Entsorgen Sie das Gerät und die Batterien auf umweltfreundliche Art und Weise gemäß den Vorschriften Ihres Landes.

ES - DESHACERSE DEL APARATO

Reciclar el aparato y pilas usadas de forma ecologica conforme a las disposiciones legales de su país.

PT - COMO DESFAZER-SE DA UNIDADE

Tente reciclar a unidade e as pilhas usadas respeitando o ambiente e em conformidade com as normas vigentes no seu país.

OPERATION MANUAL

Thank you for buying this Briteq® product. To take full advantage of all possibilities and for your own safety, please read these operating instructions very carefully before you start using this unit.

FEATURES

- This attractive RETRO-STYLE PROJECTOR is the perfect eyecatcher for many applications, including podiums, TV-studios, discotheques, lounges, and many more ... !
- The combination of its gold colored reflector and HPL-575 halogen lamp produces a pleasant warm light.
- The integrated high power RGB-leds (156 x 1W RGB) can light up the reflector to produce amazing extra effects!
- Integrated DMX-control for the halogen lamp dimmer & RGB-effects with different channel modes.
- Prepared for wireless DMX-control with our optional "WTR-DMX DONGLE".
- Can also be used in Standalone or master/slave mode, without the need for a DMX-controller.
- RDM-functionality for easy remote setup: DMX addressing, channel mode, ...
- The matrix LCD-display assures easy navigation in the different setup menus
- TV-Studio ready: passive cooling system and flicker free 1200Hz LED refresh rate.
- Four dimmer curves: linear, square, inverse square, S-curve
- In case of DMX failure you can choose between Standalone, blackout and freeze mode.
- Lock function to avoid unwanted altering of the settings.
- White balance adjustment to perfectly match the colors of several projectors.
- Default factory settings + user settings can be saved/loaded.
- Neutrik PowerCON in/outputs: easy daisy chaining of several units.
- Both 3pin & 5pin DMX in/outputs for maximum compatibility
- Prepared for use with omega brackets for fast installation
- Uses an HPL-575W lamp, G9.5 base with heat sink. (not included)
- An optional flight case for 2 units is available.

BEFORE USE

- Before you start using this unit, please check if there's no transportation damage. Should there be any, do not use the device and consult your dealer first.
- **Important:** This device left our factory in perfect condition and well packaged. It is absolutely necessary for the user to strictly follow the safety instructions and warnings in this user manual. Any damage caused by mishandling is not subject to warranty. The dealer will not accept responsibility for any resulting defects or problems caused by disregarding this user manual.
- Keep this booklet in a safe place for future consultation. If you sell the fixture, be sure to add this user manual.

Check the contents:

Check that the carton contains the following items:

- English operating instructions, other languages can be downloaded from our website.
- BT-VINTAGE
- PowerCON mains cable

SAFETY INSTRUCTIONS:



CAUTION
RISK OF ELECTRIC SHOCK
DO NOT OPEN



CAUTION: To reduce the risk of electric shock, do not remove the top cover. No user-serviceable parts inside. Refer servicing to qualified service personnel only.



The lightning flash with arrowhead symbol within the equilateral triangle is intended to alert the user or the presence of un-insulated "dangerous voltage" within the product's enclosure that may be of sufficient magnitude to constitute a risk of electric shock.



The exclamation point within the equilateral triangle is intended to alert the user to the presence of important operation and maintenance (servicing) instructions in the literature accompanying this appliance.



This symbol means: indoor use only



This symbol means: Read instructions



This symbol determines: the minimum distance from lighted objects. The minimum distance between light-output and the illuminated surface must be more than 1 meters

RISK GROUP 2
CAUTION:
Do not stare at operating lamp

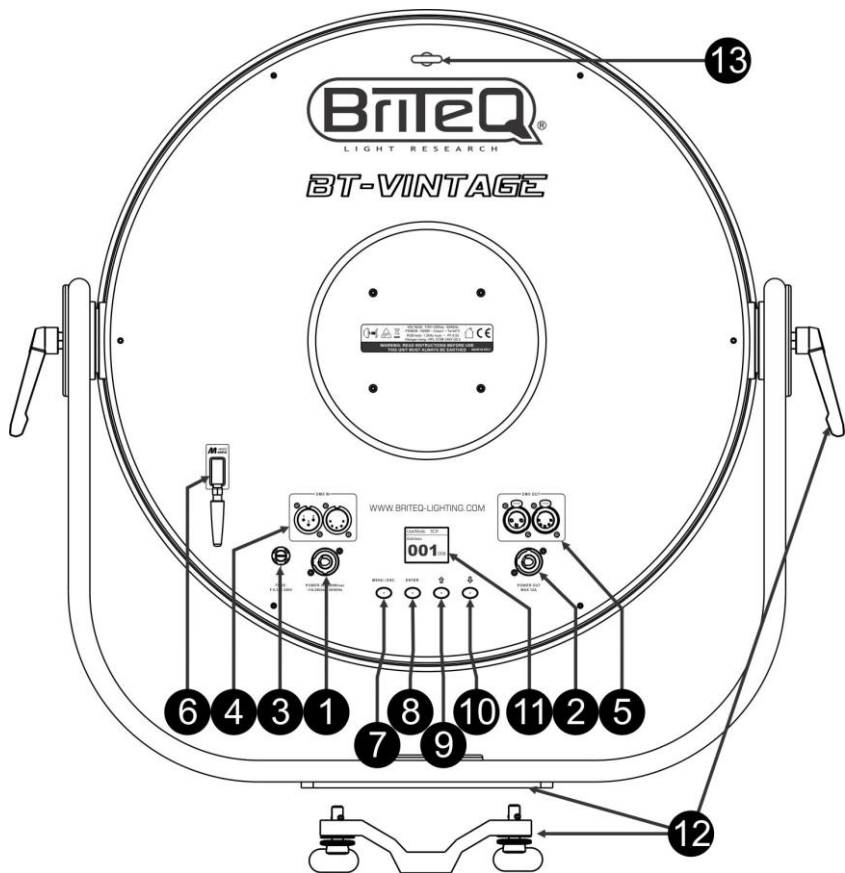
CAUTION: Do not stare at operating lamp.
May be harmful to the eyes.

- To protect the environment, please try to recycle the packing material as much as possible.
- To prevent fire or shock hazard, do not expose this appliance to rain or moisture.
- To avoid condensation to be formed inside, allow the unit to adapt to the surrounding temperatures when bringing it into a warm room after transport. Condense sometimes prevents the unit from working at full performance or may even cause damages.
- This unit is for indoor use only.
- Don't place metal objects or spill liquid inside the unit. Electric shock or malfunction may result. If a foreign object enters the unit, immediately disconnect the mains power.
- Locate the fixture in a well ventilated spot, away from any flammable materials and/or liquids. The fixture must be fixed at least 50cm from surrounding walls.
- Don't cover any ventilation openings as this may result in overheating.
- Prevent use in dusty environments and clean the unit regularly.
- Keep the unit away from children.
- Inexperienced persons should not operate this device.
- Maximum safe ambient temperature is 40°C. Don't use this unit at higher ambient temperatures.
- Make sure the area below the installation place is free from unwanted persons during rigging, de-rigging and servicing.
- Allow the device about 10 minutes to cool down before to start servicing.
- Always unplug the unit when it is not used for a longer time or before to start servicing.
- The electrical installation should be carried out by qualified personal only, according to the regulations for electrical and mechanical safety in your country.
- Check that the available voltage is not higher than the one stated on the unit.
- The power cord should always be in perfect condition. Switch the unit immediately off when the power cord is squashed or damaged. It must be replaced by the manufacturer, its service agent or similarly qualified persons in order to avoid a hazard.
- Never let the power-cord come into contact with other cables!
- This fixture must be earthed in order to comply with safety regulations.
- Don't connect the unit to any dimmer pack.
- Always use an appropriate and certified safety cable when installing the unit.
- In order to prevent electric shock, do not open the cover. Apart from the mains fuse there are no user serviceable parts inside.
- **Never** repair a fuse or bypass the fuse holder. **Always** replace a damaged fuse with a fuse of the same type and electrical specifications!
- In the event of serious operating problems, stop using the fixture and contact your dealer immediately.
- The housing and the lenses must be replaced if they are visibly damaged.
- Please use the original packing when the device is to be transported.
- Due to safety reasons it is prohibited to make unauthorized modifications to the unit.

Important: Never look directly into the light source! Don't use the effect in the presence of persons suffering from epilepsy.

DESCRIPTION:

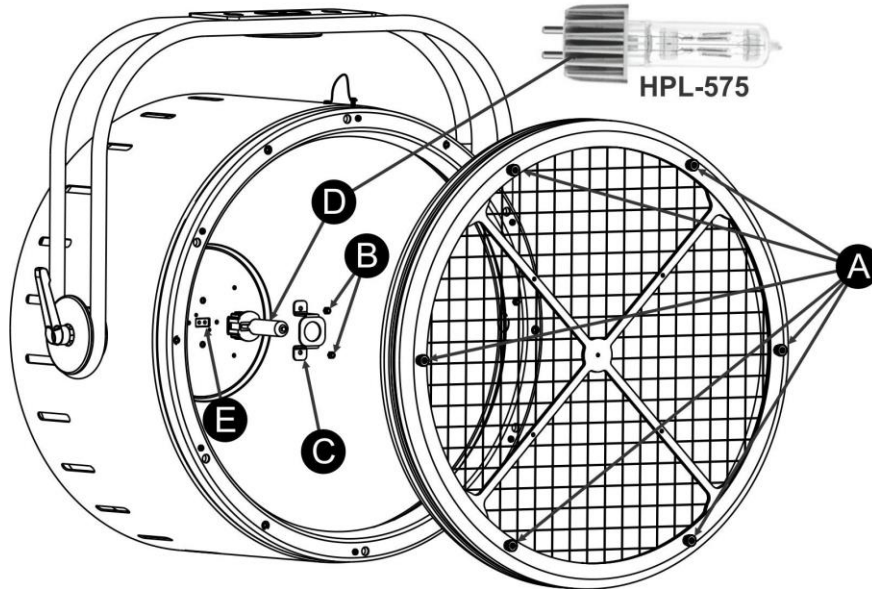
1. **MAINS INPUT:** equipped with original Neutrik PowerCON®. Connect the supplied mains cable or any PowerCON® extension cable here.
2. **MAINS OUTPUT:** used to daisy chain the power to several other projectors. Always pay attention to the maximum load while adding projectors! Special Multi cables (PowerCON® + DMX XLR-cables are optionally available: see our website!)
3. **MAINS FUSE:** protects the unit in case of electrical problems, always use the prescribed fuse!
4. **DMX IN:** both 3pin and 5pin inputs are available to daisy chain the projector with other units that will be controlled by a DMX-controller. The DMX-inputs are also used to update the firmware of the projector, see the upgrade instructions on our website.
5. **DMX OUT:** both 3pin and 5pin outputs are available to daisy chain the projector with other units that will be controlled by a DMX-controller.
6. **[M-DMX] INPUT:** Please note that this USB-connector is NOT used for updates or to connect the unit to a PC! Instead this USB-connector makes it very easy to add wireless DMX to the unit! Just add the (optional) WTR-DMX DONGLE from BRITEQ® and you will get wireless DMX! No extra settings to be made in the setup menu, just follow the procedure in the user manual supplied with the WTR-DMX DONGLE from BRITEQ®. (available from WWW.BRITEQ-LIGHTING.COM - order code: 4645)
7. **[MENU/ESC.]-button:** used to enter and exit the setup menu or to jump to a higher level in the setup menu.
8. **[ENTER]-button:** used to select a menu option or confirm a setting.
9. **▲-button:** used to go to the previous menu option or to increase a parameter value.
During normal working mode you can press this button to flip the display. (turn it 180°)
10. **▼-button:** used to go to the next menu option or to decrease a parameter value.
11. **DISPLAY:** the backlit matrix LCD-display shows important information like: channel mode, DMX-start/end address, ... The backlight is lit soon as one of the buttons is pressed. The display blinks while the DMX signal is lost.
12. **HANGING BRACKET:** with a knob on both sides to fasten the unit in the desired position. One optional "OMEGA BRACKET BIG" can be used to fix the projectors easily on the truss.
13. **SAFETY EYEBOLT:** used to attach a safety cable when the unit is rigged (see paragraph "overhead rigging")



LAMP (RE)PLACEMENT



In case of replacement of the lamp or maintenance, do not open the fixture within 10 minutes until the unit cools down after switching off. Always unplug the unit before servicing! Always use the same type of spare parts (bulbs, fuses, etc.) When replacing parts, please only genuine spare parts.



This projector comes without an HPL-575W halogen lamp with specially cooled G9.5 base. (see picture) Several brands offer this lamp, please make sure to choose the right voltage before installing! Please follow these steps:

- Switch the unit off and unplug the mains cable.
- Wait for about 10 minutes until the unit has been cooled down.
- Unscrew the 6 knobs [A] that keep the front grill in place.
- Gently remove the front grill (a safety cable prevents the grill from falling)
- On the inside you will see the lamp socket [E] with its special mounting bracket [C]
- Loosen the 2 screws [B] that keep the bracket [C] in place and remove the bracket gently.
- Unplug the old lamp (if there is one). Hold the lamp socket while unplugging the lamp!
- Hold the metal socket (heat sink) of the new lamp while pressing it gently in the lamp socket [E].

Important remarks!

- Check the label on the backside of the device or see the technical specifications in this manual to know which lamp should be used. Never install lamps with a higher wattage! Lamps with higher wattage generate temperatures the device was not designed for.
- **Don't touch the glass of the new bulb with bare hands!** This drastically shortens the lifespan of the lamp. If you touched the lamp, clean it with a cloth and a little denatured alcohol. Wipe the lamp off before installing.
- Put the metal bracket [B] gently over the lamp and fix it with the 2 screws [B]
- Put the front grill back in place and fasten the 6 knobs [A].
- Done!

OVERHEAD RIGGING

Important: The installation must be carried out by qualified service personal only. Improper installation can result in serious injuries and/or damage to property. Overhead rigging requires extensive experience! Working load limits should be respected, certified installation materials should be used, the installed device should be inspected regularly for safety.

- Make sure the area below the installation place is free from unwanted persons during rigging, de-rigging and servicing.
- Locate the fixture in a well ventilated spot, far away from any flammable materials and/or liquids. The fixture must be fixed **at least 50cm** from surrounding walls.
- The device should be installed out of reach of people and outside areas where persons may walk by or be seated.



- Before rigging make sure that the installation area can hold a minimum point load of 10times the device’s weight.
- Always use a certified safety cable that can hold 12times the weight of the device when installing the unit. This secondary safety attachment should be installed in a way that no part of the installation can drop more than 20cm if the main attachment fails.
- The device should be well fixed; a free-swinging mounting is dangerous and may not be considered!
- Don’t cover any ventilation openings as this may result in overheating.
- The operator has to make sure that the safety-relating and machine-technical installations are approved by an expert before using them for the first time. The installations should be inspected every year by a skilled person to be sure that safety is still optimal.

SETUP MENU

With the setup menu you can fully configure the projector. All settings are preserved when the unit is disconnected from the mains.

Level 1	Level 2	Level 3		
SET CONFIG	DMX-Address	001 - XXX		
	CHAN. Mode	5CH		
		6CH		
		7CH		
	Standalone	NO DMX Mode	Blackout Freeze Standalone	
		SLAVE Mode	ON / OFF	
	FIXTURE Set	DIM Curve	Linear	
			Square	
			Inv. Square	
			S-Curve	
	DISPLAY Set	DimmerSpeed	0 - 2000 ms	
		White Balance	50-255	
		Backlight	ON, 02-60M	
		Flip 180°	ON / OFF	
		AUTO LOCK	ON /OFF	
	DEFAULTS	noDMX blink	ON /OFF	
		Temp C/F	Celcius/Fahrenheit	
		Factory	LOAD ?	
	INFORMATION	TIMERS	USER Def.	LOAD / SAVE ?
			Total Time	xxxx Hrs
LED Temp.		Last JOB	xxxx Hrs	
Model Name		xxx °C / °F		
Firmware V.		BT-VINTAGE		
TEST	AUTO TEST	ON / OFF		

General instructions for setup.

The SETUP-menu has three logically structured levels, refer to the menu structure.

- Press the [MENU] button to enter the SETUP-menu.
- Press the ▲/▼ buttons to browse the different functions of the setup menu until the required function is shown on the display.
- Press the [ENTER] button to access the function and change its parameters.
- Use ▲/▼ buttons to change the value.
- Press the [ENTER] button again confirm.
- To jump to a higher menu level: press the [MENU] button.
- To exit the SETUP-menu: press the [MENU] button several times until the standard display is shown.

Remark: to make things easier you will always enter the SETUP-menu at the last used location.

[SET CONFIG > ADDRESS Set]

Used to set the desired DMX-address.

- Press the ▲/▼ buttons until the desired function is showing on the display.
- Press the [ENTER] button: the values can be changed
- Use ▲/▼ buttons to select the desired DMX512 address. The last occupied DMX-address is also shown: makes it easier to set the address of the next unit in the chain.
- Once the correct address shows on the display, press the [ENTER] button to confirm.

Note: on RDM-compatible controllers this option can also be remotely set.

[SET CONFIG > CHAN. Mode]

Used to set the desired channel mode.

- Press the ▲/▼ buttons until the desired function is showing on the display.
- Press the [ENTER] button: the values can be changed
- Use ▲/▼ buttons to select the desired mode: 5CH, 6CH or 7CH
- Once the correct option shows on the display, press the [ENTER] button to confirm.

Note: on RDM-compatible controllers this option can also be remotely set.

[SET CONFIG > Standalone]

All functions in this level are related to the Standalone mode.

Note: the setting of this mode have NO effect while the projector is used as SLAVE or in DMX-mode.

[NO DMX Mode]

Used to set how the projector reacts when the DMX-signal disappears.

- Press the ▲/▼ buttons until the desired function is showing on the display.
- Press the [ENTER] button: the values can be changed
- Use ▲/▼ buttons to select the desired mode:
 - **[BLACKOUT]:** output turns black while no DMX is detected.
 - **[FREEZE]:** output based on the last valid DMX-signal is kept on the projector.
 - **[STANDALONE]:** (also called MASTER-mode) while no DMX is detected the projector works in Standalone mode, using the settings as selected in the **[Standalone]** part of the setup menu (see below for more information)
- Once the correct option shows on the display, press the [ENTER] button to confirm.

Note: as soon as the input detects a DMX-signal: [blackout], [freeze] or [Standalone] mode will be cancelled.

[SLAVE Mode]

Used to set the projector as slave in a master/slave setup.

- Press the ▲/▼ buttons until [SLAVE MODE] is showing on the display.
- Connect the projector to a master.

Note: only to be used when the DMX-line is exclusively equipped with the same projector models. Only one unit can be set in Standalone mode, all other units must be configured as [SLAVE MODE = ON]

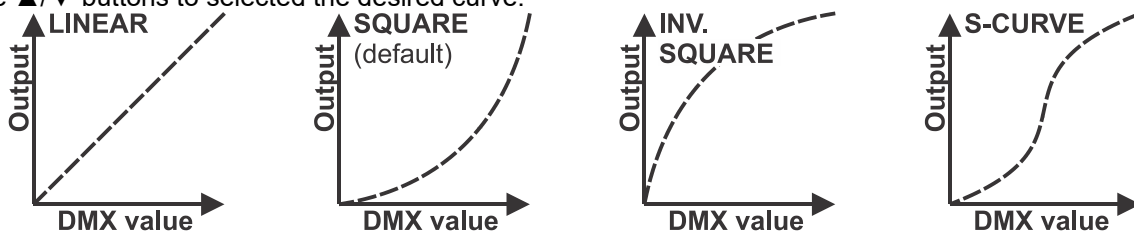
[SET CONFIG > FIXTURE Set]

All functions in this level are related to the behavior of the RGB-effects.

[DIM Curve]

Used to set the dimmer curve of the master dimmer.

- Press the ▲/▼ buttons until the desired function is showing on the display.
- Press the [ENTER] button: the values can be changed
- Use ▲/▼ buttons to selected the desired curve:



- Once you have the desired curve, press the [ENTER] button to save it.

[Dimmer Speed]

Used to set the speed (smoothness) of the RGB-dimmer continuously.

- Press the ▲/▼ buttons until the desired function is showing on the display.
- Press the [ENTER] button: the values can be changed
- Use ▲/▼ buttons to select the desired speed:
 - **000 (0ms)**: The projector follows the instructions instantly, no delay (also called [LED behavior]).

...

- **255 (2000ms)**: The projector imitates the behavior of a halogen lamp (slower reaction time).
- Once the desired value shows on the display, press the [ENTER] button to confirm.

Remark: The default value (100 or 440ms) is the most realistic value to imitate "halogen lamp" behavior. At the same time the light output will be instantaneous while pushing a flash button on your DMX-controller. Please note that with values close to 0ms the dimming will not be perfectly smooth, you will notice some small steps while dimming. This behavior is normal, just increase the value to +/-100ms to avoid this.

[White Bal.] (WHITE BALANCE)

Used to set the white balance or to perfectly match the colors of several projectors.

- Press the ▲/▼ buttons until the desired function is showing on the display.
- Press the [ENTER] button: the display shows the value (050-255) for RED. (change with ± buttons)
- Press the [ENTER] button: the display shows the value (050-255) for GREEN. (change with ± buttons)
- Press the [ENTER] button: the display shows the value (050-255) for BLUE. (change with ± buttons)
- Repeat these steps until you have the desired values. The settings will be automatically saved.

Note: the setting of this option affects all color settings, static colors and DMX-controlled colors.

[SET CONFIG > DISPLAY Set]

This level contains all display related settings.

[Backlight]

Used to adjust how long the display stays lit after the last time it was used.

- Press the ▲/▼ buttons until the desired function is showing on the display.
- Press the [ENTER] button: the values can be changed
- Use ▲/▼ buttons to select one of these options:
 - **[ON]**: display is always lit.
 - **[0xxM]**: you can set the number of minutes before the display turns dark after it was last used.
- Press the [ENTER] button to confirm.

[Flip 180]

Used to turn the display over 180°: **[ON] = display is upside-down.**

- Press the ▲/▼ buttons until the desired function is showing on the display.
- Press the [ENTER] button: the values can be changed
- Use ▲/▼ buttons to toggle between ON and OFF.
- Press the [ENTER] button to confirm.

[AUTO LOCK]

Used to lock the setup menu against unwanted altering of the settings.

- Press the ▲/▼ buttons until the desired function is showing on the display.
- Press the [ENTER] button: the values can be changed
- Use ▲/▼ buttons to toggle between ON and OFF.
- Press the [ENTER] button to confirm.

Remark: while the display is locked you have to press the [MENU]-button for 3s to enter the setup menu.

[noDMX blink]

Used to select if the display should blink or not when the DMX signal was lost.

- Press the ▲/▼ buttons until the desired function is showing on the display.
- Press the [ENTER] button: the values can be changed
- Use ▲/▼ buttons to toggle between ON and OFF.
- Press the [ENTER] button to confirm.

[Temp C/F]

Used to select if the LED-temperature is shown in degrees Celcius [°C] or Fahrenheit [°F].

- Press the ▲/▼ buttons until the desired function is showing on the display.
- Press the [ENTER] button: the values can be changed
- Use ▲/▼ buttons to select one of these options:
 - **[Celcius]:** LED-temperature is shown in degrees Celcius [°C].
 - **[Fahrenheit]:** LED-temperature is shown in degrees Fahrenheit [°F].
- Press the [ENTER] button to confirm.

[SET CONFIG > DEFAULTS]

This is your emergency exit if you really messed up the settings: just return to FACTORY presets. Also a user setting can be saved/loaded.

- Press the ▲/▼ buttons until the desired function is showing on the display.
- Press the [ENTER] button: the values can be changed
- Use ◀/▶ buttons to select one of these options:
 - **[FACTORY]:** optimized standard settings for professional control of the unit.
 - **[USER Def.]:** you can adapt the factory settings and save the new parameters as your personal USER-settings.
- Press the [ENTER] button:
 - **[FACTORY] was selected:** the display shows “LOAD”
 - Press the [ENTER] button and use ▲/▼ buttons to confirm YES / NO
 - Press the [ENTER] button to confirm.
 - **[USER Def.] was selected:** the display shows “LOAD”
 - Use ◀/▶ buttons to select LOAD / SAVE
 - Press the [ENTER] button and use ▲/▼ buttons to confirm YES / NO
 - Press the [ENTER] button to confirm.
 - **[SAVE] was selected:** the current settings of the setup menu are saved to memory.
 - **[LOAD] was selected:** the previously saved settings are loaded.

PARAMETER name	FACTORY DEFAULTS	USER DEFAULTS
DMX Channel mode	6 CH	Current setting in the menu
No DMX Mode	Standalone	Current setting in the menu
SLAVE Mode	OFF	Current setting in the menu
Standalone Halogen Dim	value 100 (40%)	Current setting in the menu
Standalone RGB Fade	speed at 50%	Current setting in the menu
Standalone RGB Master	value 255 (100%)	Current setting in the menu
DIM Curve	Square	Current setting in the menu
DimmerSpeed	value 100 (440ms)	Current setting in the menu
WHITE BALANCE	RGB = 255	Current white balance settings are saved
Backlight	2M	Current setting in the menu
Flip 180°	OFF	Current setting in the menu
Auto Lock Menu	OFF	Current setting in the menu
NO DMX blink	ON	Current setting in the menu
Temp C/F	Celcius	Current setting in the menu

[INFORMATION > TIMERS]

Shows the time the projector was used.

- Press the ▲/▼ buttons until the desired function is showing on the display.
- Press the [ENTER] button: the values can be changed
- Use ▲/▼ buttons to select one of these options:
 - **[Total Time]:** The total time the unit was used since it was used for the 1st time, non resettable.
 - **[Last JOB]:** The time the unit was used on the last job.
- Press the [ENTER] button to confirm.

NOTE: Press the ▲/▼ buttons together for about 5 seconds to reset the [Last JOB] timer.

[INFORMATION > LED Temp.]

Shows the actual temperature of the RGB LEDs.

- Press the ▲/▼ buttons until the desired function is showing on the display.
- Press the [ENTER] button: the LED temperature is shown.

[INFORMATION > Model Name]

Shows the name of the projector.

- Press the ▲/▼ buttons until the desired function is showing on the display.
- Press the [ENTER] button: the display shows the name of the projector.

[INFORMATION > Firmware V.]

Shows the current firmware version in the projector.

- Press the ▲/▼ buttons until the desired function is showing on the display.
- Press the [ENTER] button: the display shows the firmware versions of the different processors in the projector: 1U01, 2U01, 3U01, ...

Note: The firmware of this unit can be upgraded using a special upgrade tool with Windows® software. (separately available from Briteq). More information about this can be found in the user manual of the upgrade tool and / or our website: www.briteq-lighting.com

[TEST > AUTO TEST]

Used to start the automatic test function: all functions will be tested.

- **Important: use the projector in STANDALONE (NO DMX or Ethernet connection)**
- Press the ▲/▼ buttons until the desired function is showing on the display.
- Press the [ENTER] button: the projector starts an automatic AUTO TEST program until you stop it.
- Press the [MENU] button to stop the program.

ELECTRICAL INSTALLATION & USE



Important: The electrical installation should be carried out by qualified personal only, according to the regulations for electrical and mechanical safety in your country.

STANDALONE WITH built-in FUNCTIONS:

Use this function when you want an instant show on only 1 projector.

- Connect the projector to the mains and turn it on.
- Make sure to select the [Standalone] option in the [NO DMX Mode]
- The projector will automatically work [Standalone] mode when no DMX-signal is detected.
- The following “Standalone menu” will be available to adjust the Standalone functions:

Standalone	Halogen Dim	0 - 100%
	RGB Static	RED
		ORANGE
		YELLOW
		GREEN
		CYAN
		BLUE
		PURPLE
	USER COLOR	
	RGB Fade	Speed 0-255
RGB Master	0 - 100%	

[HALOGEN DIM]

Used to set the output level of the HPL-575 halogen lamp while the unit works in Standalone.

- First press the [ENTER] button to enter the “standalone menu”.
- Press the ▲/▼ buttons until the desired function is showing on the display.
- Press the [ENTER] button: the values can be changed
- Use ▲/▼ buttons to select the desired level for the halogen lamp dimmer.
- Once you have the desired level, press the [ENTER] button to save it.

[RGB STATIC]

Used to set the desired fixed color while used as master: 7 preset colors + 1 custom color.

- First press the [ENTER] button to enter the “standalone menu”.
- Press the ▲/▼ buttons until the desired function is showing on the display.
- Press the [ENTER] button: the values can be changed

- Use ▲/▼ buttons to selected the desired color:
 - [RED]
 - [ORANGE]
 - [YELLOW]
 - [GREEN]
 - [CYAN]
 - [BLUE]
 - [PURPLE]
 - [USER COLOR] this is a color that can be set by the user. Follow these steps:
 - Press the [ENTER] button
 - Press the ▲/▼ buttons to select one of the RGB colors.
 - Press the [ENTER] button and use the ▲/▼ buttons to change the value of the selected color.
 - Press the [ENTER] button to confirm.
 - Repeat these steps until you obtain the desired user color.

[RGB Fade]

This mode shows smooth color transitions, speed can be adjusted..

- First press the [ENTER] button to enter the “standalone menu”.
- Press the ▲/▼ buttons until the desired function is showing on the display.
- Press the [ENTER] button: the values can be changed
- Use ▲/▼ buttons to select the desired speed for the color fading effect.
- Press the [ENTER] button to save.

[RGB MASTER]

Used to set the master dimmer for the RGB-colors while used as master.

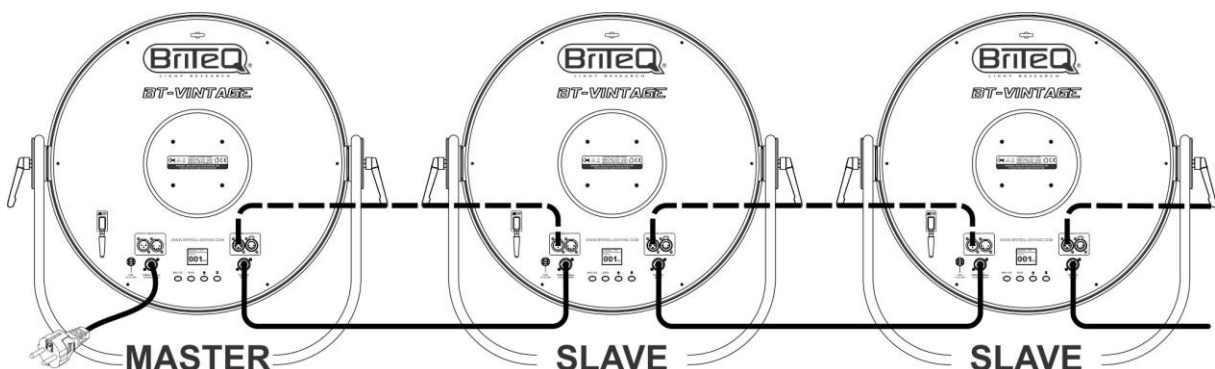
- First press the [ENTER] button to enter the “standalone menu”.
- Press the ▲/▼ buttons until the desired function is showing on the display.
- Press the [ENTER] button: the values can be changed
- Use ▲/▼ buttons to select the desired level for the master dimmer. (please note that the last selected static color will be used to set the value)
- Once you have the desired level, press the [ENTER] button to save it.

Remark: you can save these settings in the [USER Def] (user defaults) menu: see previous chapter.

STANDALONE MASTER/SLAVE WITH built-in FUNCTIONS:

Use this function when you want an instant show running simultaneously on several units. By linking the units in master/slave connection, the first unit will control the other units.

- Connect the projectors as shown in the drawing below

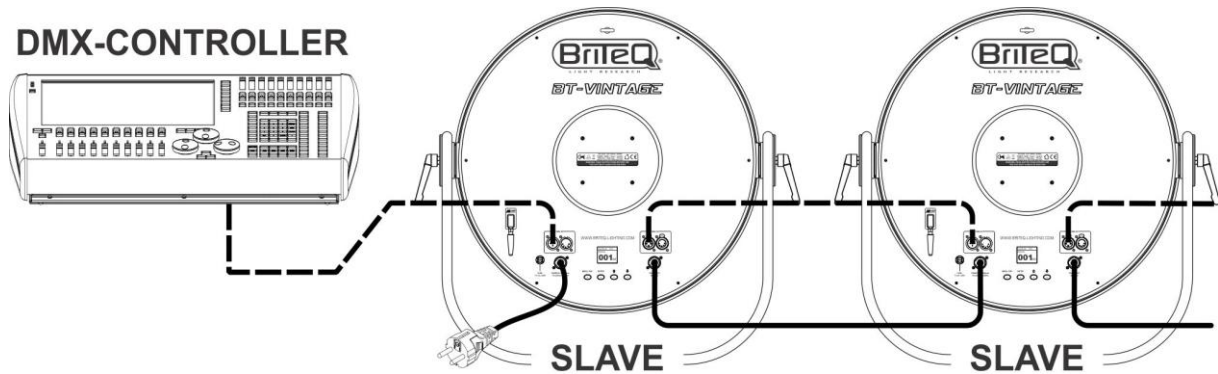


- **Setup of the master:** exactly the same procedure as the “STANDALONE” setup.
- **Setup of the slaves:** all slaves should be set to [SLAVE MODE = ON], See the section “setup menu” for more information on the settings.

Electrical installation for two or more units in DMX-mode:

Use this function when you want to control the projectors by any DMX controller.

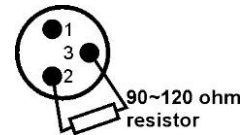
- Connect the projectors as shown in the drawing below.



- First put the projectors in the desired DMX-mode: see the different DMX-charts and choose the one that suits you best.
- Give all projectors a start address: each projector shows its start + end address, make sure that the addresses do not overlap!

Some general information on DMX:

- The DMX-protocol is a widely used high speed signal to control intelligent light equipment. You need to “daisy chain” your DMX controller and all the connected units with a good quality balanced cable.
- Both XLR-3pin and XLR-5pin connectors are used, however XLR-3pin is more popular because these cables are compatible with balanced audio cables.
- Pin layout XLR-3pin: Pin1 = GND ~ Pin2 = Negative signal (-) ~ Pin3 = Positive signal (+)
- Pin layout XLR-5pin: Pin1 = GND ~ Pin2 = Negative signal (-) ~ Pin3 = Positive signal (+) ~ Pins4+5 not used.
- To prevent strange behavior of the light effects, due to interferences, you must use a 90Ω to 120Ω terminator at the end of the chain. Never use Y-splitter cables, this simply won't work!
- Make sure that all units are connected to the mains.
- Each light effect in the chain needs to have its proper starting address so it knows which commands from the controller it has to decode.



DMX CHARTS

3 Different DMX channels modes are available:

5CH	6CH	7CH	VALUES	FUNCTION
1	1	1	000-255	DIMMER HALOGEN LAMP (0-100%)
2	2	2	000-255	RGB MASTER (0-100%)
				RGB STROBE
	3	3	000-007	Open (no strobe)
			008-067	Random strobe (slow → fast)
			068-255	Normal strobe (slow → fast)
3	4	4	000-255	RED (0-100%)
4	5	5	000-255	GREEN (0-100%)
5	6	6	000-255	BLUE (0-100%)
				COLOR EFFECTS
		7	000-007	No function (channels 4+5+6 are used)
			008-027	Red
			028-047	Orange
			048-067	Yellow
			068-087	Green
			088-097	Cyan
			098-107	Blue
			108-117	Purple
			118-255	COLORFADE (very slow → fast)

RDM FUNCTIONS / REMOTE SETUP

RDM means “Remote Device Management”. This projector works with a brief set of RDM-functions which means that it can setup a bi-directional communication with an RDM-compatible DMX-controller. Some of these functions are briefly explained below, others will be added in the future.

- The DMX-controller sends out a “discovery command”, all RDM devices respond and send their unique device ID.
- The DMX-controller asks each RDM device for some basic data so it knows which devices are connected. The projector will respond:
 - **Device name:** BT-VINTAGE
 - **Manufacturer:** Briteq®
 - **Category:** LED Dimmer
 - **Firmware:** x.x.x.x (firmware version of the projector)
 - **DMX address:** xxx (current DMX start address of the projector)
 - **DMX footprint:** xx (number of DMX-channels used by the projector)
 - **Personality:** xx (current personality [or DMX-working mode] used by the projectors)
- The DMX-controller can send certain commands to each RDM device which allow remote setup of the units. Thanks to this the projector can be setup remotely.

The following functions can be managed remotely:

No more need to take a ladder and set all units one by one!

- **DMX START ADDRESS:** The start address can be set remotely from 001 to xxx.
- **PERSONALITY:** The DMX working mode (DMX-chart) can be set remotely.

These 2 functions make it possible to prepare a complete DMX-patch of all projectors on the DMX-controller and send these data to all projectors at once. More functions will be added later.

MAINTENANCE

- Make sure the area below the installation place is free from unwanted persons during servicing.
- Switch off the unit, unplug the mains cable and wait until the unit has been cooled down.

During inspection the following points should be checked:

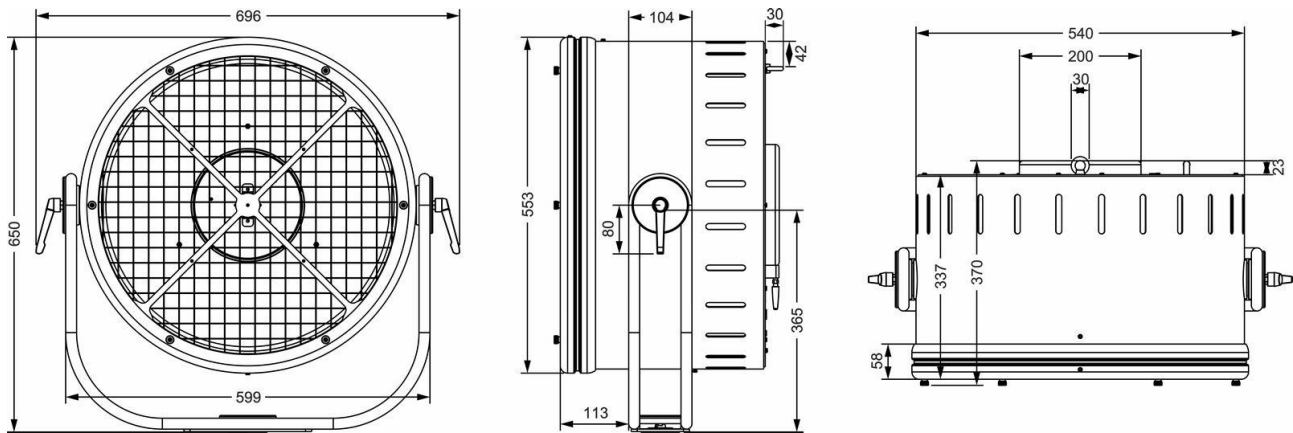
- All screws used for installing the device and any of its parts should be tightly fastened and may not be corroded.
- Housings, fixations and installations spots (ceiling, truss, suspensions) should be totally free from any deformation.
- When an optical lens is visibly damaged due to cracks or deep scratches, it must be replaced.
- The mains cables must be in impeccable condition and should be replaced immediately when even a small problem is detected.
- In order to protect the device from overheat the cooling fans (if any) and ventilation openings should be cleaned monthly.
- The interior of the device should be cleaned annually using a vacuum cleaner or air-jet.
- The cleaning of internal and external optical lenses and/or mirrors must be carried out periodically to optimize light output. Cleaning frequency depends on the environment in which the fixture operates: damp, smoky or particularly dirty surroundings can cause greater accumulation of dirt on the unit's optics.
 - Clean with a soft cloth using normal glass cleaning products.
 - Always dry the parts carefully.

Attention: We strongly recommend internal cleaning to be carried out by qualified personnel!

SPECIFICATIONS

This unit is radio-interference suppressed. This product meets the requirements of the current European and national guidelines. Conformity has been established and the relevant statements and documents have been deposited by the manufacturer.

Mains Input:	AC 100V - 240V, 50/60Hz
Halogen lamp (110Vac mains input):	G9,5 ~ HPL-575W 120V
Halogen lamp (230Vac mains input):	G9,5 ~ HPL-575W 240V
Max. Power consumption:	980W (Halogen + LEDs full on)
Fuse:	250V T6.3A (20mm glass)
DMX connections:	3pin + 5pin XLR male / female
DMX channels used:	3 modes (5+6+7ch)
RGB LEDs:	156pcs RGB 1W
LED Refresh rate:	1200 Hz
Size:	see drawings.
Weight:	16 kg



The information might be modified without prior notice
 You can download the latest version of this user manual on our website: www.briteq-lighting.com



MAILING LIST

EN: Subscribe today to our mailing list for the latest product news!

FR: Inscrivez-vous à notre liste de distribution si vous souhaitez suivre l'actualité de nos produits!

NL: Abonneer je vandaag nog op onze mailinglijst en ontvang ons laatste product nieuws!

DE: Abonnieren Sie unseren Newsletter und erhalten Sie aktuelle Produktinformationen!

ES: Suscríbete hoy a nuestra lista de correo para recibir las últimas noticias!

WWW.BRITEQ-LIGHTING.COM

Copyright © 2017 by BEGLEC NV

t Hofveld 2C ~ B1702 Groot-Bijgaarden ~ Belgium

Reproduction or publication of the content in any manner, without express permission of the publisher, is prohibited.